

**Hackberry Heckler
XXXII
April 2022**

Hackberry Men's Shed, Ontario.

Doug and David Thompson took on a unique project, building a Catio for a local member of the Carleton Place community. A structure around her deck covered in chicken wire to allow her cat to enjoy the outdoors and the freedom to roam around unimpeded by a rope and collar. The job turned out well. Here we have a photo of the building of the door and putting the finishing touches on the Catio.

***** FIELD REPORTS *****



***** PROJECTS *****



The Ocean Wave is still rolling along. AB

***** TOOLS *****

Tablesaw FULL



Tablesaw EMPTY



Notice the daylight coming up through the dust chute. Until such time as we have your Mother on the payroll, cleanup is YOUR job.



Ross added a couple of attachments to the grinder to help sharpen chisels. Of late a seat has been added to the side to hold the longer of the items when not in use.



...

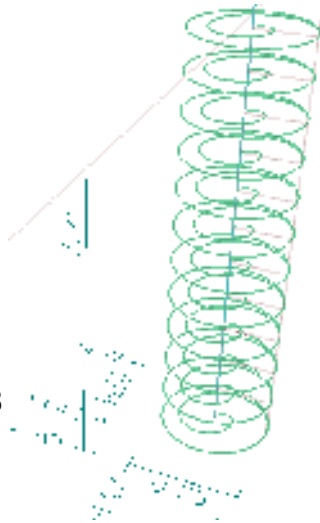
*** FACILITIES ***

The LOFT WINDOW is now OPEN and to allow some airflow the hatch can be left ajar. To help with this a small brace has been added to keep it open an inch or so. (Both will need closing in the Fall)

*** OUTREACH ***

The Horticultural Society came looking for some stands to hold up heads for fascinators. We'll have to wait for June to see the final products, for now the eleven bases and poles are working their way through 'production'.

The CNC was used to bore a 3" x 63/64" dia hole into the neck of each polystyrene head. Here is the torturous route taken by the 1/4" drill bit.



Not to be outdone the Missssippi Mudds theater group asked for a couple of playing cards only these are 28 x 20 inches on Corplast. The web was searched for some suitable artwork for the Jacks of Hearts and Spades. These were pulled into the drawing program Inkscape, converted into vectors and spat out as a **dx**f file. Next they were opened in dxf2gcode which will take vectors and generate the **ng**c file for the CNC. Somewhere along the way they were scaled up to fit the panels. Instead of routing the outlines, a felt pen was added to the CNC head to turn it into a plotter.

Here you see part of the original plot and the finished artwork which will be worn as a plackard. Notice what we see as a line becomes two in the dxf file. For the two hearts the inside line was deleted.



**** MISCELLANEOUS ****

Doug thought you would be interested to see how his plants are growing in his basement. He has cucumbers tomatoes, pumpkin, squash, dill, basil and a few weeds growing. A spring tradition. He also has a few types of lettuce and radishes and cilantro springing up in his outside garden. Even his potatoes and garlic are poking through the ground. Hoping for a bountiful harvest!!!



Doug harvested his first two tomatoes on May 1st. That is early.



Anyone want some plants? Doug has a few to spare.

***** WEB *****

Building the Empire State Building:

<https://www.youtube.com/watch?v=EdDECW5FLAM>



*“Are these some of
Doug's tomatoe plants,
they look a bit odd?”*

*“They're a hybrid, he
gave me crushed egg
shells to sprinkle on
each time I water
them!”*

***** MEMBERSHIP *****

***** ? *****

With thanks to those who've seen fit to
send in photographs, articles etc.

♪ se non è vero, è ben trovato ♪

